

MASCHI A MACCHINA - MACHINE TAPS

MASCHI A MACCHINA **HSSE M35 5%Co**

SCANALATURE ELICOIDALI - **ELICA SINISTRA 35°** - Imbocco "C"

Filettatura metrica ISO/DIN 13 - UNI 4535 a passo grosso - 6H

Filettatura SINISTRA

MACHINE TAPS **HSSE M35 5%Co**

SPIRAL FLUTES - LEFT HELIX 35° - Chamfer form "C"

ISO Metric Coarse Thread - UNI 4535 - DIN 13 - 6H

LEFT HAND Thread

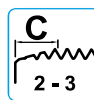
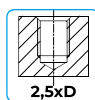
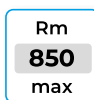
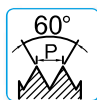
 HSSE



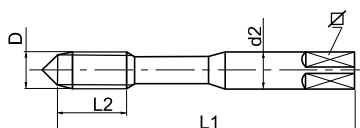
4512.L3
4514.L3



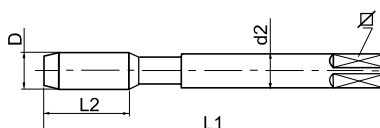
4512.LF3
4514.LF3




DIN 371 D ≤ 10mm.



DIN 376 D ≥ 12mm.



DIN 371 / DIN 376							4512.L3	4514.L3	4512.LF3	4514.LF3
D	p	L ₁	L ₂	d ₂	∠		nudi/naked	nudi/naked	TX	TX
3	0,5	56	5	3,5	2,7	2,50	*	-	*	-
4	0,7	63	7	4,5	3,4	3,30	29,26	-	40,70	-
5	0,8	70	8	6,0	4,9	4,20	29,26	-	40,70	-
6	1	80	10	6,0	4,9	5,00	29,26	-	40,70	-
8	1,25	90	13	8,0	6,2	6,75	34,10	-	50,49	-
10	1,5	100	15	10,0	8,0	8,50	39,05	-	57,31	-
12	1,75	110	18	9,0	7,0	10,25	-	52,91	-	72,71
14	2	110	20	11,0	9,0	12,00	-	72,60	-	99,00
16	2	110	20	12,0	9,0	14,00	-	82,17	-	109,34

*Prezzo a richiesta / Price on demand

Altre dimensioni su richiesta / Other dimensions on demand

Materiali / Application: nudo / naked: P1 - P2 - P3 - P4 / N1 - N2 / N6 - N7
TX: P1 - P2 - P3 - P4 / M1 - M2 / K3 - K4 / N2 - N3 / N7

N.B.: ≥ M8 centro femmina / ≥ M8 female center