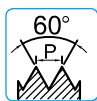
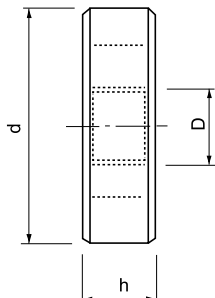


FILIERE TONDE - ROUND DIES

FILIERE TONDE con IMBOCCO CORRETTO
Filettatura **UNF** a passo fine ASME B1.1 - 2A

ROUND DIES with GUN NOSE
UNF Fine Thread ASME B1.1 - 2A



| DIN-EN 22568 | | | | | 4675 | 4675.1 |
|--------------|---------------------|----|----|--------|------|-----------------------------------|
| D | filetti x 1" TPI | d | h | Ø mm | HSS | Filettatura SINISTRA LEFT Hand |
| n. 4 | 48 | 20 | 5 | 2,845 | | * |
| n. 5 | 44 | 20 | 5 | 3,175 | | * |
| n. 6 | 40 | 20 | 5 | 3,505 | | * |
| n. 8 | 36 | 20 | 7 | 4,166 | | * |
| n. 10 | 32 | 20 | 7 | 4,826 | | * |
| n.12 | 28 | 20 | 7 | 5,486 | | * |
| 1/4 | 28 | 25 | 9 | 6,350 | | * |
| 5/16 | 24 | 25 | 9 | 7,938 | | * |
| 3/8 | 24 | 30 | 11 | 9,525 | | * |
| 7/16 | 20 | 30 | 11 | 11,113 | | * |
| 1/2 | 20 | 38 | 10 | 12,700 | | * |
| 9/16 | 18 | 38 | 10 | 14,287 | | * |
| 5/8 | 18 | 45 | 14 | 15,876 | | * |
| 3/4 | 16 | 45 | 14 | 19,050 | | * |
| 7/8 | 14 | 55 | 16 | 22,225 | | * |
| 1" | 12 | 55 | 16 | 25,400 | | * |
| 1"1/8 | 12 | 65 | 18 | 28,575 | | - |
| 1"1/4 | 12 | 65 | 18 | 31,750 | | - |
| 1"3/8 | 12 | 65 | 18 | 34,925 | | - |
| 1"1/2 | 12 | 75 | 20 | 38,100 | | - |

* Prezzo e disponibilità a richiesta / Price and delivery time on request